

**HAITIAN INTERNATIONAL HOLDINGS LIMITED**  
Unit 1105 level 11  
Metroplaza Tower 2  
223 Hing fong RD Kwai Fong N.T  
haitian@mail.haitian.com  
www.haitian.com

**NINGBO HAITIAN HUAYUAN MACHINERY CO.,LTD.**  
Export Processing Zone, Ningbo 315800 China  
+86-574-8617 7242  
+86-574-8622 1864  
haitian@mail.haitian.com  
www.haitian.com



Haitian Jupiter<sup>2</sup> Series

Haitian Partner:

HT 20163804-IV



# Haitian Jupiter II Series

Generation 2 two platen hydraulic clamping machine



The Haitian JU II series machine has significant improvements to the previous series machine providing more advantages for many different molding applications. The new design incorporates additional functions and user benefits which greatly enhances the machine performance and part quality.

With flexible clamping unit to injection unit combinations, the machine can be tailored or specific or general molding applications.

A wide variety of options are available to ensure the machine meets the requirements for the molded product.

With more than 40 years experience in the manufacturing of plastic injection molding machines, Haitian understands the needs of the customer and continues to innovate advantages for the plastic injection molding industry.

## We Create Advantage 2

### More Power saving:

Newly developed servo drives and control systems for reduced energy consumption.

### Faster:

Improved mechanical design for less energy consumption and faster response with an overall speed increase due to patented locking and mold height adjustment technology

### Higher Rigidity:

Significant improvement in machine rigidity due to redesigned base frame and injection unit support

### Higher Mold Carrying Capacity:

Patented moving platen support providing higher maximum mold weight capacity

### Redesigned Clamping Unit:

Larger mold opening stroke with improved minimum and maximum mold height adjustment with less than 1 minute for mold height adjustment

### Higher Injection Precision:

Redesigned injection unit provides higher parallelism for the screw movement with closed loop control feedback for pressure/speed functions

### Improved Access:

Access to the clamping and injection unit has been improved due to the redesigned guarding system.

### Improved Option Positioning:

Options are relocated to provide easier access during mold changes

### JU 4500 II / 2250



### JU 10800 II / 8400

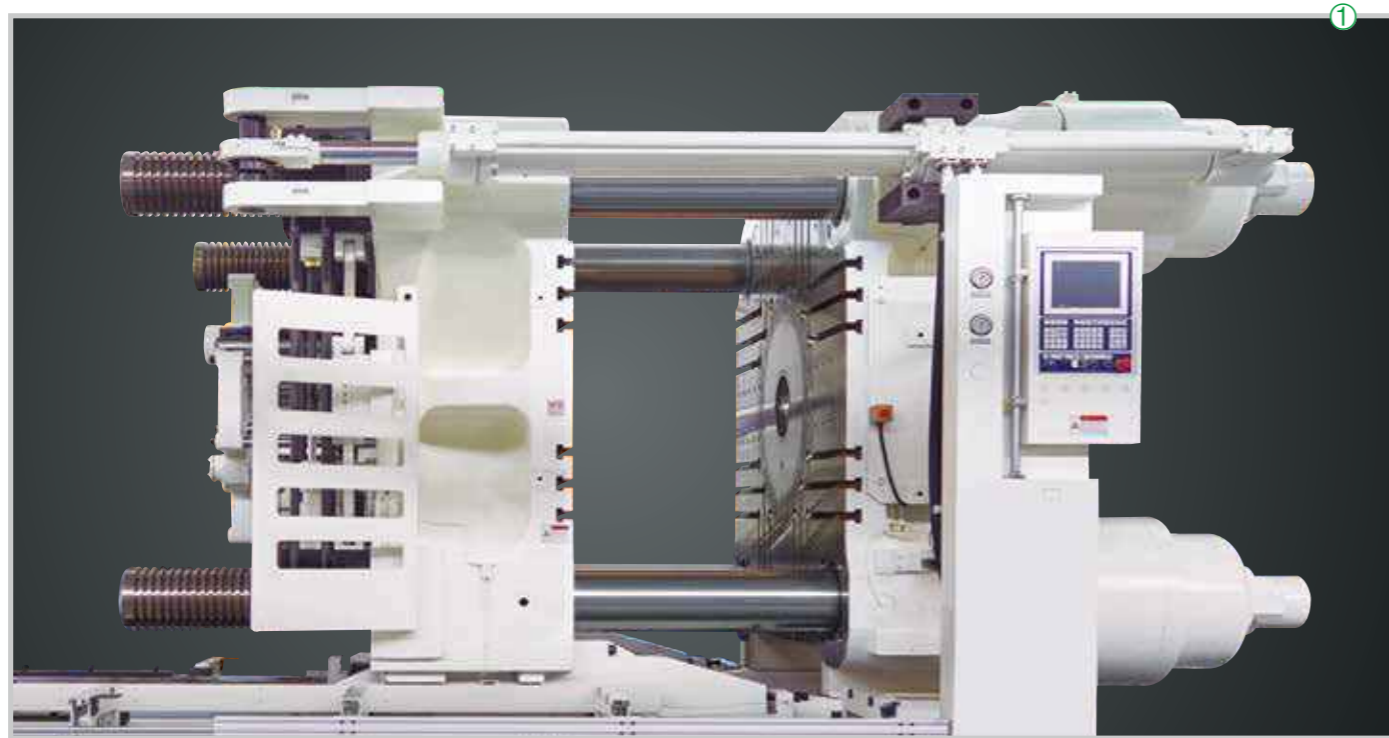


### JU 21000 II / 14600



# Haitian Jupiter II Series

Generation 2 two platen hydraulic clamping machine



## Clamping Unit Features

- Two balanced mounted fast mold open/close cylinders
- Adjustable moving platen support device.
- Wear resistance slide base for moving platen support device.
- Low pressure mold protection device.
- Digital transducer for accurate platen position feedback.
- Hydraulic and electrical safety devices.( Mechanical is optional)
- Fully adjustable hydraulic ejection via the control panel.
- Hydraulic core puller.  
4500-6500kN(2 Moving platen)  
7500-14000kN-(1 Fixed,1 Moving Platen)  
16000-28000kN-(1 Fixed,2 Moving Platen)  
28000-66000kN-(2 Fixed,2 Moving Platen)
- Automatic lubrication system



**Figure ①**  
The structure of clamping unit more reasonable because of tie bar suspension structure which reduce the load.

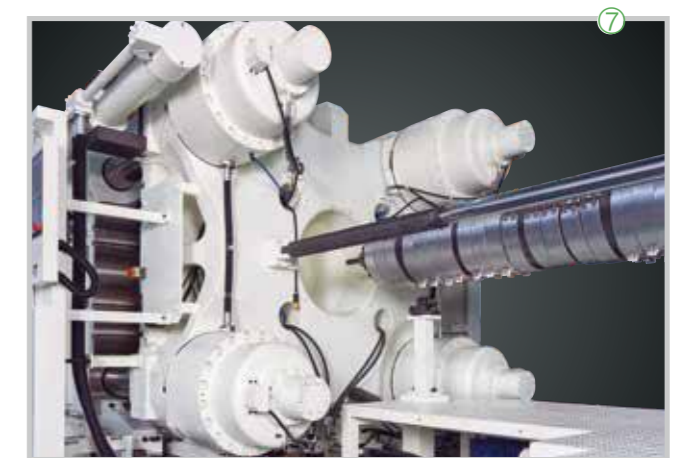
**Figure ②**  
Optimization design of hydraulic system and promotion of clamping proportional valve control technologies,so the machine run more stable and reliable.



**Figure ③**  
Reverse mounted ejection plate with the flexibility for optional longer strokes.

**Figure ④**  
Parallel lock nut operation ensures fast and accurate response.

**Figure ⑤**  
Safety plates cover the entire open area between the tie bars for increased operator safety.

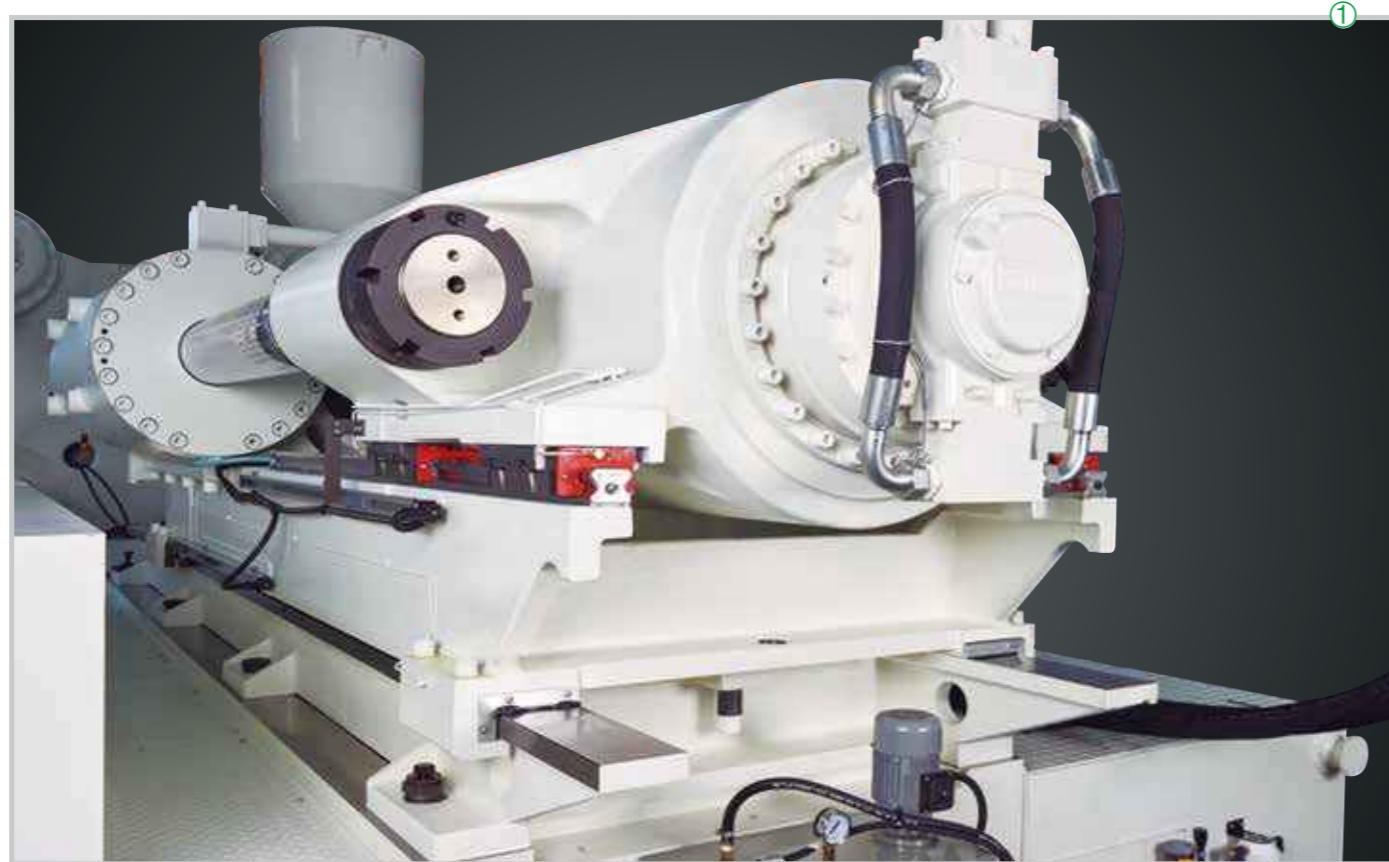


**Figure ⑥**  
Large moving platen supports ensures high platen rigidity during movement with increase mold weight loading. Reduced platen vertical movement for long core molds.

**Figure ⑦**  
Four short stroke mold break cylinders for accurate mold height control with closed loop position feedback, ensures the mold is clamped with parallel movement.

# Haitian Jupiter II Series

Generation 2 two platen hydraulic clamping machine



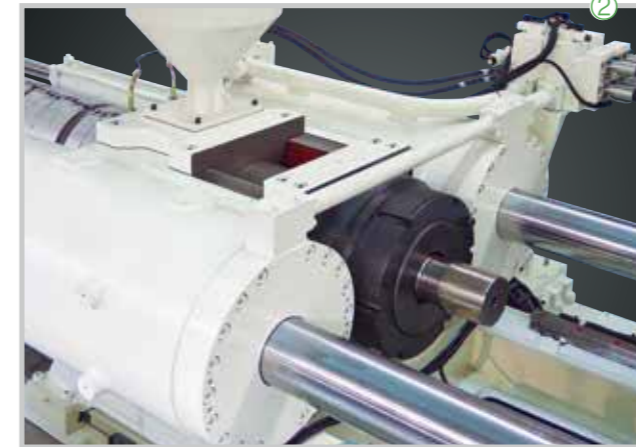
## Injection Unit Features

- Balanced tandem injection cylinders
- Balanced tandem injection unit cylinders
- Proportional injection control
- Proportional holding pressure control
- Proportional back pressure control
- PID barrel heating control
- Cold start screw rotation protection
- High torque screw motor
- Safety purge cover with feedback sensor
- Purge removal tray
- Anti-slip covers.

## Hydraulic System Features

- Closed loop servo hydraulic drive system
- Proportional mold open/close control
- By-pass oil filtration
- Low level oil detection
- High/Low temperature alarm
- Externally removable pump suction filters

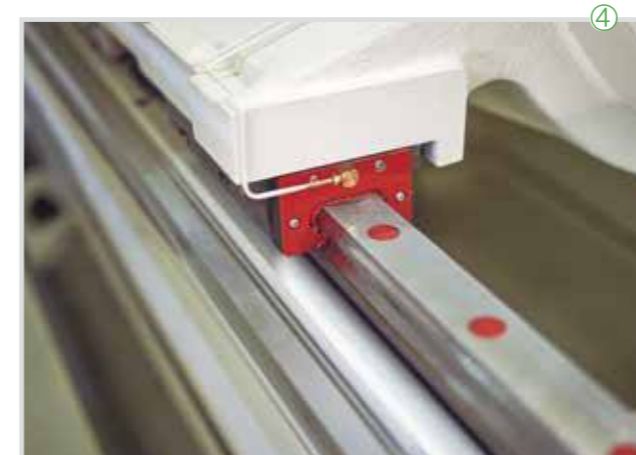
**Figure ①**  
Variable injection unit sizes are available according to product requirements.



**Figure ②**  
Easy screw/barrel removal for quick changeover. (13000kN above)



**Figure ③**  
Simple and accurate barrel support adjustment. (13000kN above)



**Figure ④**  
Low friction-high precision guiding mechanism for perfect screw guidance. (13000kN above)

**Figure ⑤**  
Highly rigid injection unit guidance which is separated from the screw guidance for complete independence of injection movement. (13000kN above)

**Figure ⑥**  
New 75KW and 110KW servo drive units for higher response and simplified hydraulic system.



# Haitian Jupiter II Series

Generation 2 two platen hydraulic clamping machine

## Control System Features

- High speed controller from Europe
- 12" LCD graphic touch screen
- Optional - 15" LCD graphic touch screen
- Screen saver for prolonged life
- Multi-languages are standard and variable according the user.
- Data key lock.
- PID barrel temperature control
- Optional - PID hot runner control ( Max 96 Zones)
- Closed loop movement control
- Proportional pressure/speed control
- Optional - cycle sequencer
- Digital mold position transducer
- Barrel heating startup timer
- Cycle time analysis
- Production data analysis
- Quality data analysis
- Configurable alarm shut down sequence
- Service function screens for full system diagnosis.
- Remote connection for external communication. ( Ethernet)
- USB Printer port
- USB data port for mold or production data storage
- RFID sensor for access control



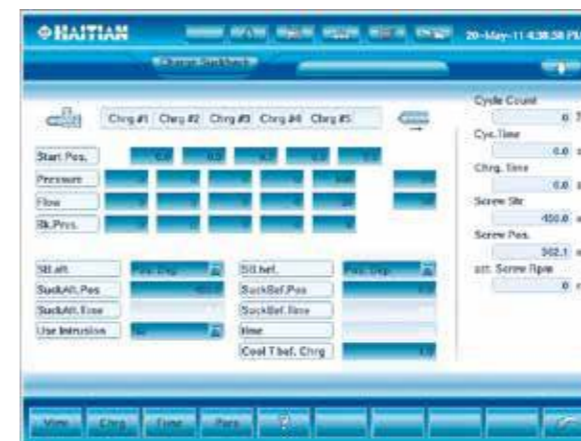
The LCD HMI control unit has been specially designed by Haitian to provide the operator with easy to use functions with a convenient panel layout



Mold open/close screen: Precisely control of the position of mold open/close



Injection screen: 6-stage injection control



Plasticizing screen: Back pressure proportionally control



Quick set screen: Enter easily and vividly



Core screen: Flow and pressure controllable



Temperature screen: Convenient operation

# Haitian Jupiter II Series

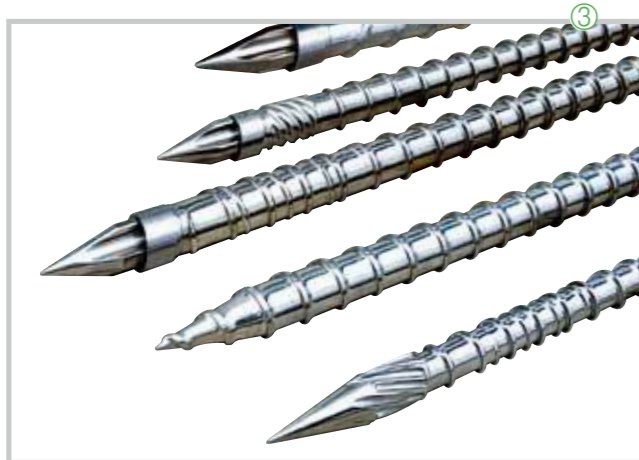
Generation 2 two platen hydraulic clamping machine



①



②



③



④

**Figure ①**  
Visual Water Flow Manifold.

**Figure ②**  
Hydraulic or Pneumatic Shut-Off nozzle.

**Figure ③**  
Various screw designs according specific applications.

**Figure ④**  
Servo Electric Screw drive.

## Options

- Wide range for injection unit and mold clamping unit for specific applications
- PQ Close- loop control valve
- MOOG valve close-loop injection
- Mold temperature controller
- Special function (ejection during mold opening)
- Spring shut-off nozzle
- Fast injection by accumulator
- Air valve
- Multiple pneumatic core pullers
- Flow meter
- Variable displacement pump
- Three color alarm light
- Robot interface E67
- Mold positioning ring
- Hopper magnet
- Dryer
- Chiller
- Air compressor
- Conveyor belt
- CE certificate
- CSA certificate

## Typical Applications

- Automotive  
Bumper,Instrument Panels
- Logistics  
Pallet,Waste Containers,Crates
- Home Appliance  
Washing Machine,Refrigerators
- Electrical  
Television
- Housing  
Garden furniture,waste water control



**Note:**  
Normally, options are subject to change without notice. The pictures of the products for reference may be slightly different from the actual sales.